

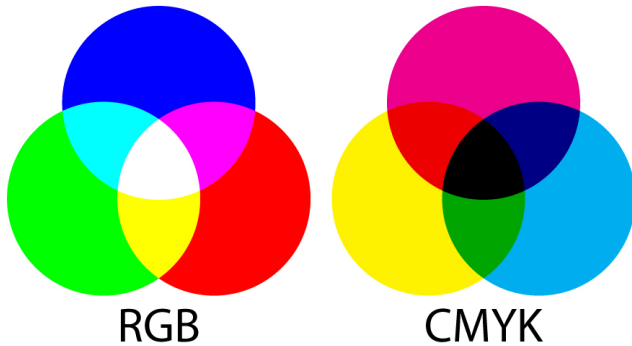
# Prepress 101: Creating Color Swatches for Print

## Process Colors (CMYK)

Process colors are regular CMYK swatches. CMYK stands for Cyan, Magenta, Yellow, and Key (black). This is the color mode you'll want to use for print projects.

When designing for print, always double check that your color swatches are CMYK rather than RGB.

RGB colors are for creating graphics for web – if you create a print document using these colors, they won't match what you are seeing on the screen.

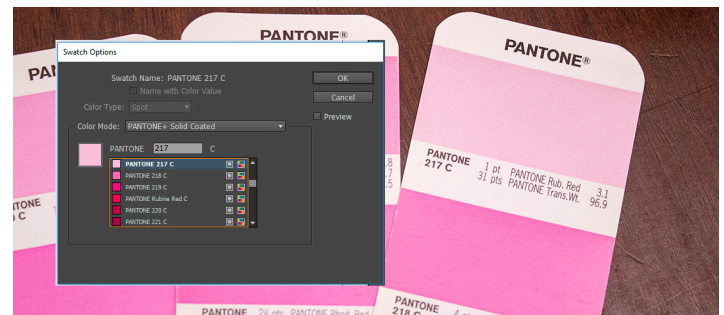


## Spot Colors (Pantones)

Spot colors are the best way to achieve color consistency across multiple print runs. The color is applied to the print job using a single run. To print with two spot colors, a job would need to be run twice.

Pantones are the most commonly used spot color printing system in the United States. You can select from an entire library of pantone colors to match your company's branding.

Make sure that you are using a color swatch from the Pantone color library. You'll need to match the number from your chosen color to the number in the library.



## Printing With Black

When browsing your Color swatches, you'll see "Registration" and "Black" as options. For print, you'll want to choose Black instead of Registration.

### BLACK'S CMYK SETTINGS:

- Cyan - 0%
- Magenta - 0%
- Yellow - 0%
- Key (Black) - 100%.

### REGISTRATION'S CMYK SETTINGS:

- Cyan - 100%
- Magenta - 100%
- Yellow - 100%
- Key (Black) - 100%.

# Black

Printing with Black swatch

# Black

Over-inking caused by Registration swatch

Because registration prints with three additional colors, you'll run into problems with over-inking when you use it for print.